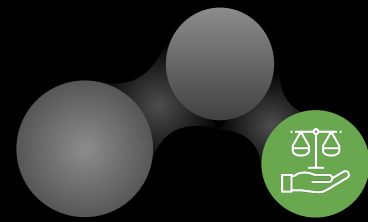




# Meet the Mentors



Ask me about...

*What sort of conversations we have with your child?*

*How we review effort with your child after reporting data points?*

*What it means to be a student in this form?*

*What we do for fun during mentor times?*

*What we need to improve on as a mentor group?*

*What opportunities are there for students in this form to get involved in the wider school community?*



# Dane Court Grammar School

## Welcome to Year 11

7th October 2025



## Mrs. Channing

Vision and values,  
Results and Destinations



## Mr. Bundock

Behaviour and attitudes, the  
landscape of Year 11, PSHE,  
expectations and trends



## Year 12 Students

A student view of Year 11

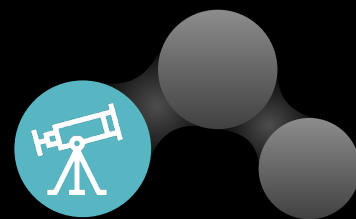


## The Mentor Team

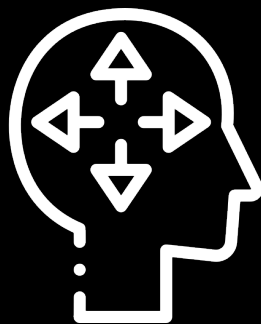
The Mentoring Curriculum



# Vision and values



Caring



Open-minded



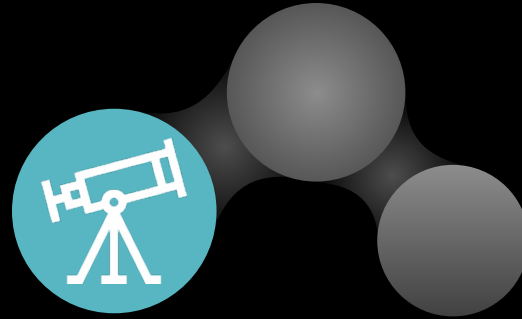
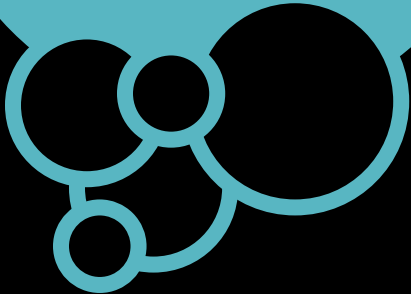
Principled



# Vision and values

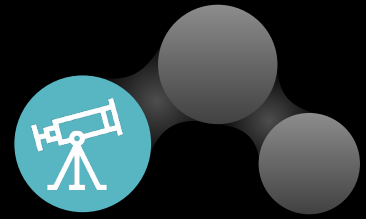


..to develop knowledgeable  
and caring young people who  
help to create a better and  
more peaceful world





# Whole-school priorities 2025-2026



An ambitious curriculum

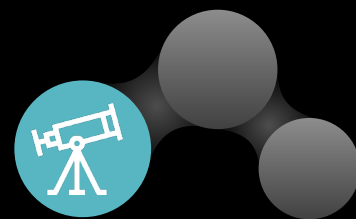
Excellent behaviour, and a safe & happy school

High quality teaching

Life-transforming outcomes & destinations



# Our Results



Dane Court IB Average Points - **35**  
(Global Average - 30)

## Destinations

- Oxford/Cambridge (5 students)
- Durham, Imperial, Loughborough
- 100% success rate for Medics



Approximately half of all grades were a **7 or above**.

Average grade of over 7 for English, Food and History.

Record numbers taking triple Science  
(3 x GCSE grades)



*In 2022/2023, 60% of pupils who missed a day in week 1 of the academic year went on to be PA (for the year) -  
**absence sticks***

Nearly 25% of secondary pupils in England were 'persistently absent' during the 2024-25 school year

Year 11 pupils with near-perfect attendance are almost **twice as likely** to achieve grade 5 or above in English and Maths compared to those with 90–95% attendance

Record 170,000 children in England missed at least half of classes in 2024

At age 28, persistently absent secondary pupils may earn **£10,000 less**, and severely absent pupils nearly **£20,000 less**, compared to those with near-perfect attendance

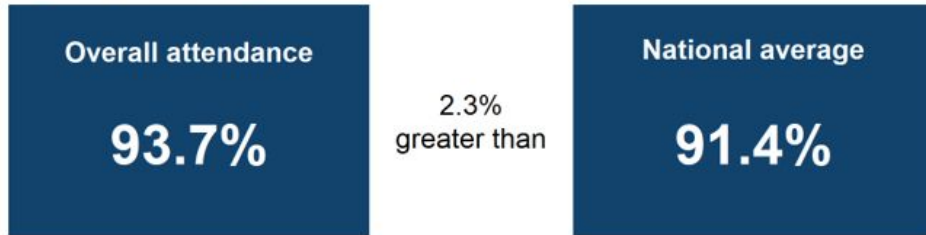


# Attendance

## Headline attendance and absence

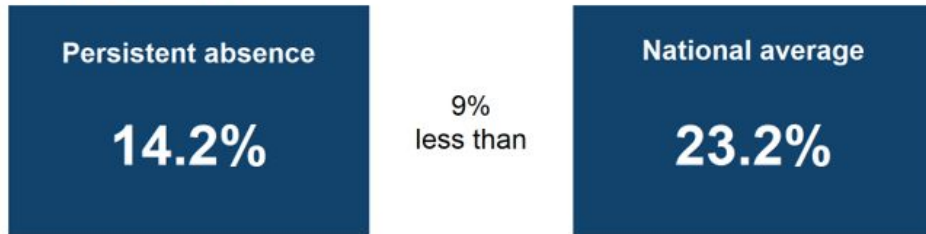
Overall attendance and persistent absence figures for pupils in years 7 to 11 compared to the national average. Results are calculated based on data from the start of the academic year 2024 to 2025, up to Wednesday 13 August 2025.

### Overall attendance



*Overall attendance is 93.7% which is 2.3% greater than the national average.*

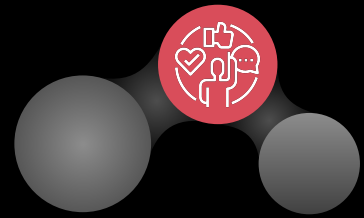
### Persistent Absence



*Persistent absence is 14.2% which is 9% less than the national average.*



# Attendance



## Current academic year up to Thursday 02 October 2025

<b>Number of pupils</b> 838	<b>Overall attendance %</b> 96.2%	<b>Overall absence %</b> 3.8%	<b>Unauthorised absence %</b> 0.5%
<b>Persistently absent</b>		<b>Severely absent</b>	
Number of persistently absent pupils	Percentage of persistently absent pupils	Number of severely absent pupils	Percentage of severely absent pupils
<b>80</b>	<b>9.5%</b>	<b>7</b>	<b>0.8%</b>

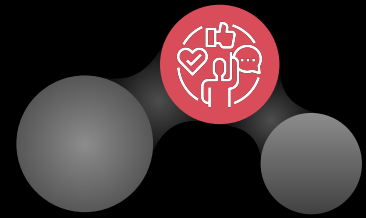
## Last 5 days (26 September 2025 to 02 October 2025)



<b>Overall attendance %</b> 95.0%	<b>Overall absence %</b> 5.0%	<b>Unauthorised absence %</b> 0.5%
--------------------------------------	----------------------------------	---------------------------------------



# Attendance



## Current academic year up to Thursday 02 October 2025

Number of pupils

160

Overall attendance %

94.2%

Overall absence %

5.8%

Unauthorised absence %

1.0%

### Persistently absent

Number of persistently absent pupils

24

Percentage of persistently absent pupils

15.0%

### Severely absent

Number of severely absent pupils

3

Percentage of severely absent pupils

1.9%

## Last 5 days (26 September 2025 to 02 October 2025)



Overall attendance %

94.0%

Overall absence %

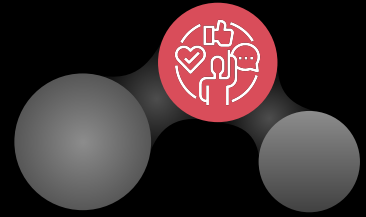
6.0%

Unauthorised absence %

0.9%



# Attendance

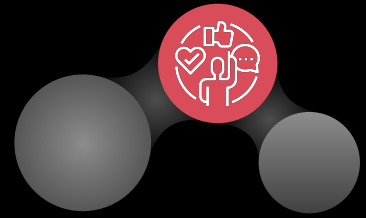


## Priorities

- Improve overall attendance (95%+)
- Continue to reduce persistent absence (10%+ of absence)
- Create a strong attendance culture - every day matters
- Early intervention



# Supporting Your Child's Attendance



## Build a Consistent Routine

- Treat school days as non-negotiable
- Encourage your child to get organised the night before (uniform, bag packed)
- Sleep, exercise and time away from screens

## Use Support Systems Early (teachers, mentor, year leader and safeguarding staff)

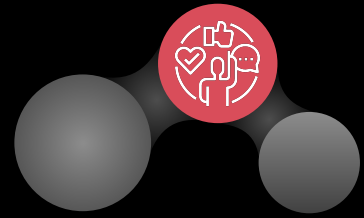
- If your child is finding attendance difficult, don't wait - let the school know

## Keep Motivation High

- Celebrate good attendance and progress



# Behaviour and attitudes



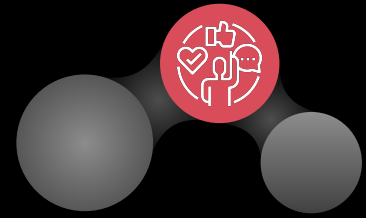
## Expectations

- Make **outstanding** behaviour the 'norm' - not just in lessons
- Be attentive and engaged in lessons - what we attend to, we learn
- Respect **ALL** members of our community - peers, staff, public
- Strive for excellent attendance - *'Pupils with higher attainment at KS2 and KS4 had lower levels of absence'* (DfE)

We will **NOT tolerate** any form of **bullying** (Incident Report Form)



# Behaviour and attitudes

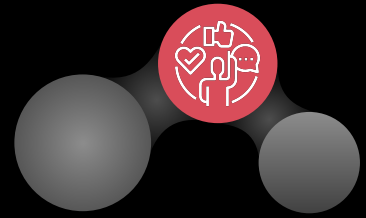


## Class Charts - online behaviour system

- Provide parents/carers with an overview of their child's behaviour
- Maintain high expectations and improve consistency
- Improve 'tracking' of behaviour - fire prevention vs fire fighting



# The Year 11 Identity



What Year 11 are getting right:

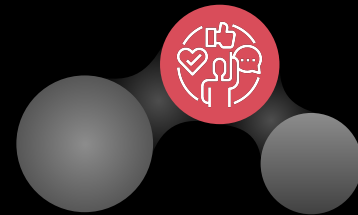
- Outstanding Engagement (298)
- Academic Success (217)
- 'Caring' behaviour (40)

What we still need to work on:

- Late to lesson (113)
- Uniform (63)
- Defiance (43)



# Priorities for Year 11





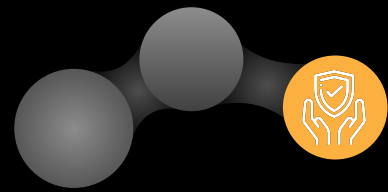
# The PSHE Curriculum - Year 11



<b>Autumn 1</b> Building for the future	<b>Autumn 2</b> Healthy relationships	<b>Spring 1</b> Independence and health and wellbeing
<b>Spring 2</b> Families	<b>Summer 1</b> Health and relationships	



# Wellbeing



## Dane Court website

Mental Health and Wellbeing Page

<https://www.danecourt.kent.sch.uk/wellbeing>



Family Support Page

<https://www.danecourt.kent.sch.uk/familysupport>

