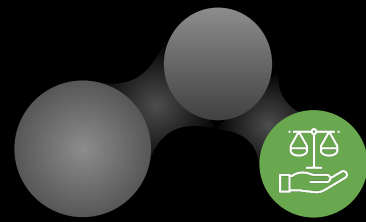




Meet the Mentors



Ask me about...

What sort of conversations we have with your child?

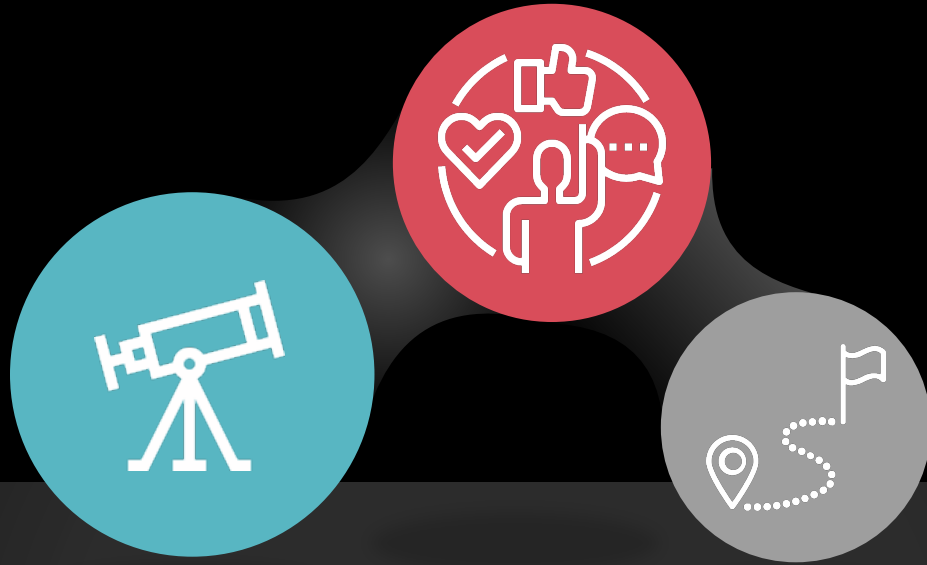
How we review effort with your child after reporting data points?

What it means to be a student in this form?

What we do for fun during mentor times?

What we need to improve on as a mentor group?

What opportunities are there for students in this form to get involved in the wider school community?



Dane Court Grammar School

Welcome to Year 9

7th October 2025



Mrs Jellett
Deputy Headteacher
Vision and values,
Results and Destinations



Mr Buttery
Miss Baylis (Acting Year Lead)
Behaviour and attitudes, the landscape
of Year 9, PSHE, expectations and trends



Year 10 Students
A student view of Year 9



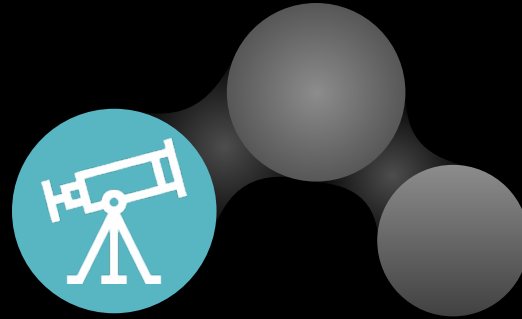
The Mentor Team
The Mentoring Curriculum



Vision and values



..to develop knowledgeable and caring young people who help to create a better and more peaceful world

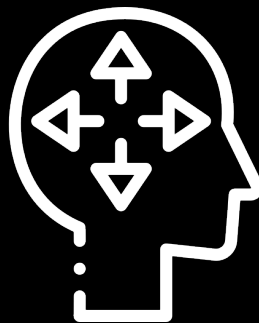




Vision and values



Caring



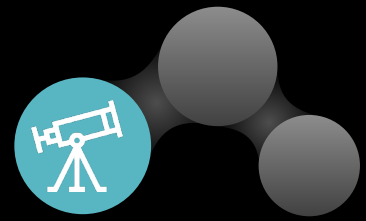
Open-minded



Principled



Whole-school priorities 2025-26



An ambitious curriculum

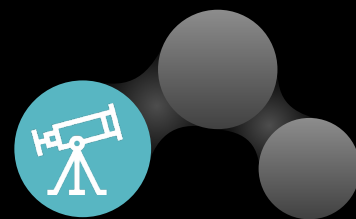
Excellent behaviour, and a safe & happy school

High quality teaching

Life-transforming outcomes & destinations



Our Results



Dane Court IB Average Points - **35**
(Global Average - 30)

Destinations

- Oxford/Cambridge (5 students)
- Durham, Imperial, Loughborough
- 100% success rate for Medics
- Degree level apprenticeships



Approximately half of all grades were a **7 or above** at GCSE level.

Average grade of over 7 for English, Food and History.

Record numbers taking triple Science
(3 x GCSE grades)



*In 2022/2023, 60% of pupils who missed a day in week 1 of the academic year went on to be PA (for the year) - **absence sticks***

Nearly 25% of secondary pupils in England were 'persistently absent' during the 2024-25 school year

Year 11 pupils with near-perfect attendance are almost **twice as likely** to achieve grade 5 or above in English and Maths compared to those with 90–95% attendance

Record 170,000 children in England missed at least half of classes in 2024

At age 28, persistently absent secondary pupils may earn **£10,000 less**, and severely absent pupils nearly **£20,000 less**, compared to those with near-perfect attendance

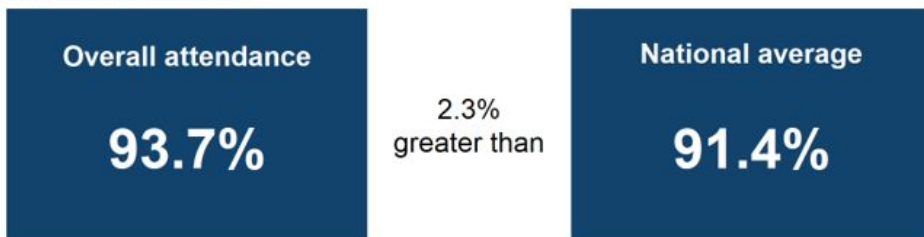


Attendance

Headline attendance and absence

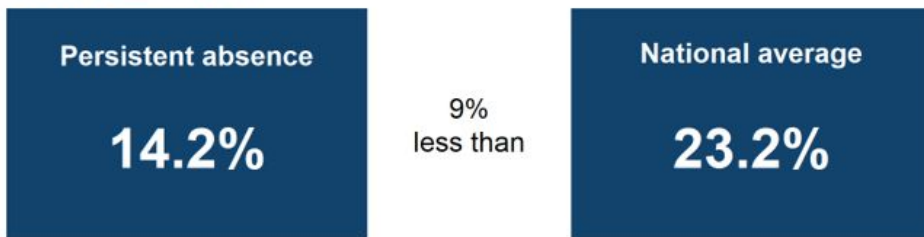
Overall attendance and persistent absence figures for pupils in years 7 to 11 compared to the national average. Results are calculated based on data from the start of the academic year 2024 to 2025, up to Wednesday 13 August 2025.

Overall attendance



Overall attendance is 93.7% which is 2.3% greater than the national average.

Persistent Absence



Persistent absence is 14.2% which is 9% less than the national average.



Whole school attendance



Current academic year up to Thursday 02 October 2025

Number of pupils

838

Overall attendance %

96.2%

Overall absence %

3.8%

Unauthorised absence %

0.5%

Persistently absent

Number of persistently absent pupils

80

Percentage of persistently absent pupils

9.5%

Severely absent

Number of severely absent pupils

7

Percentage of severely absent pupils

0.8%

Last 5 days (26 September 2025 to 02 October 2025)



Overall attendance %

95.0%

Overall absence %

5.0%

Unauthorised absence %

0.5%



Year 9 attendance



Current academic year up to Thursday 02 October 2025

Number of pupils

165

Overall attendance %

95.8%

Overall absence %

4.2%

Unauthorised absence %

0.2%

Persistently absent

Number of persistently absent pupils

18

Percentage of persistently absent pupils

10.9%

Severely absent

Number of severely absent pupils

1

Percentage of severely absent pupils

0.6%

Last 5 days (26 September 2025 to 02 October 2025)



Overall attendance %

91.1%

Overall absence %

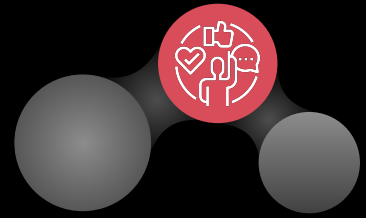
8.9%

Unauthorised absence %

0.3%



Attendance

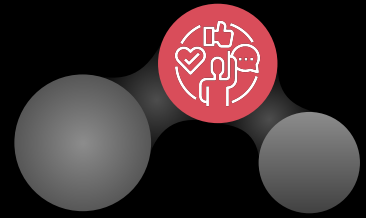


Priorities

- Improve overall attendance (95%+)
- Continue to reduce persistent absence (10%+ of absence)
- Create a strong attendance culture - every day matters
- Early intervention



Supporting Your Child's Attendance



Build a Consistent Routine

- Treat school days as non-negotiable
- Encourage your child to get organised the night before (uniform, bag packed)
- Sleep, exercise and time away from screens

Use Support Systems Early (teachers, mentor, year leader and safeguarding staff)

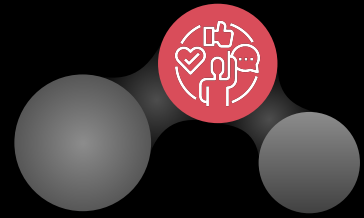
- If your child is finding attendance difficult, don't wait - let the school know

Keep Motivation High

- Celebrate good attendance and progress



Behaviour and attitudes



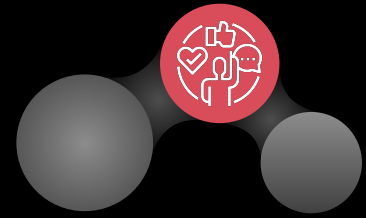
Expectations

- Make **outstanding** behaviour the 'norm' - not just in lessons
- Be attentive and engaged in lessons - what we attend to, we learn
- Respect **ALL** members of our community - peers, staff, public
- Strive for excellent attendance - *'Pupils with higher attainment at KS2 and KS4 had lower levels of absence'* (DfE)

We will **NOT tolerate** any form of **bullying** (Incident Report Form)



Behaviour and attitudes

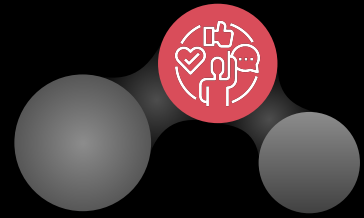


Class Charts - online behaviour system

- Provide parents/carers with an overview of their child's behaviour
- Maintain high expectations and improve consistency
- Improve 'tracking' of behaviour - fire prevention vs fire fighting



The Year 9 Identity



What Year 9 are getting right:

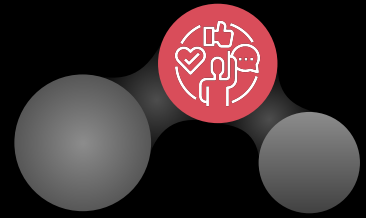
- Outstanding Engagement
- Attendance
- Academic success

What we still need to work on:

- Late to lesson
- Behaviour when playing football at lunchtime
- Unkind comments



Priorities for Year 9



- Choosing GCSE options
- Careers discussions
- Building good study habits in preparation for GCSEs



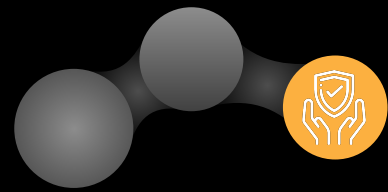
The PSHE Curriculum - Year 9



<p>Autumn 1 Peer influence, substance use and gangs</p>	<p>Autumn 2 Intimate relationships</p>	<p>Spring 1 Healthy lifestyle</p>
<p>Spring 2 Respectful relationships</p>	<p>Summer 1 Respectful relationships</p>	<p>Summer 2 Living in the wider world</p>



Wellbeing



Dane Court website

Mental Health and Wellbeing Page

<https://www.danecourt.kent.sch.uk/wellbeing>



Family Support Page

<https://www.danecourt.kent.sch.uk/familysupport>

