

Dane Court Grammar School

Welcome to Year 11

8th October 2024



Mrs Channing

Vision and values,
Results and Destinations



Mrs Brissenden

Behaviour and attitudes, the
landscape of Year 11, PSHE,
expectations and trends



Year 11 Students

A student view of Year 11



The Mentor Team

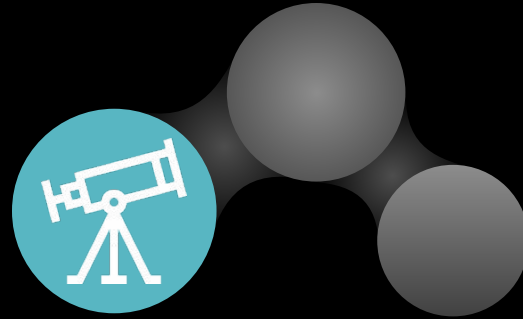
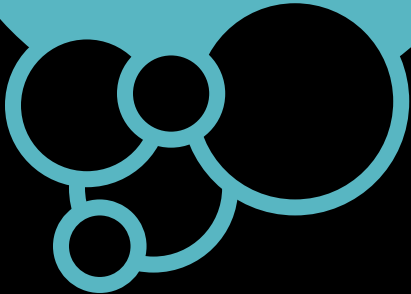
The Mentoring Curriculum



Vision and values

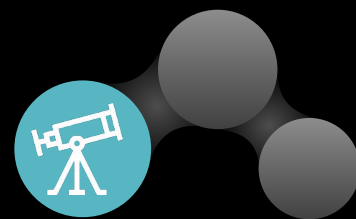


..to develop knowledgeable
and caring young people
who help to create a better
and more peaceful world

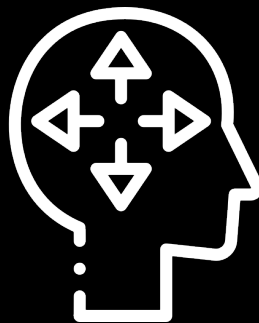




Vision and values



Caring



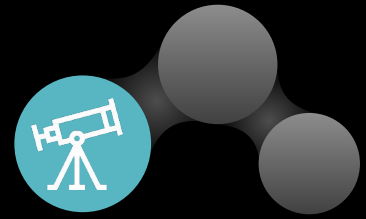
Open-minded



Principled



Whole-school priorities 2024-2025



An ambitious curriculum

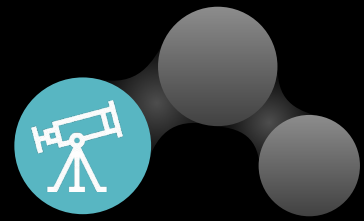
Excellent behaviour, and a safe & happy school

High quality teaching

Life-transforming outcomes & destinations



Our Results



Dane Court IB Average Points - **33**
(Global Average - 30)

Destinations - Oxford/Cambridge
(5 students), Warwick, Exeter,
Loughborough, Birmingham,
Imperial, Manchester.



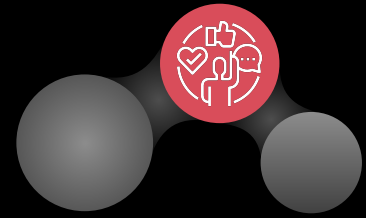
15% of **all results** were a grade 9
(A**)

Well over half of all grades were a
7 or above





Behaviour and attitudes



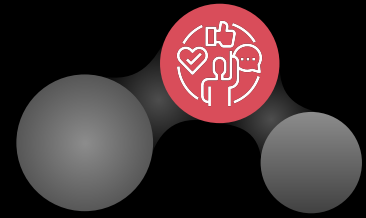
Expectations

- Make **outstanding** behaviour the 'norm'
- Be attentive and engaged in lessons
- Respect **ALL** members of our community
- Strive for excellent attendance

We will NOT tolerate any form of bullying (Incident Report Form)



Behaviour and attitudes

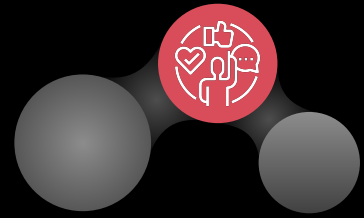


Class Charts - online behaviour system

- Provide parents/carers with an overview of their child's behaviour
- Maintain high expectations and improve consistency
- Improve 'tracking' of behaviour



The Year 11 Identity



What Year 11 are getting right:

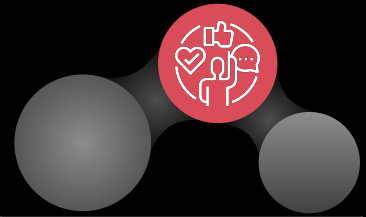
- Outstanding Engagement
- Academic Success
- 'Principled' Behaviour

What we still need to work on:

- Late to school
- Late to lesson
- Uniform



The PSHE Curriculum - Year 11

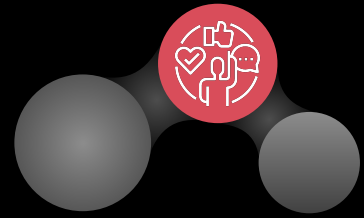


Autumn 1	Autumn 2	Spring 1	Spring 2	Summer 1
Building For The Future	Relationships	Independence and Health/Wellbeing	Families	Radicalisation

Relationships, sex and health education (RSHE) is the statutory element of our PSHE curriculum and all secondary schools in England are required to teach it. Our policy and right to withdraw letter may be found on our website. **Parents/carers can withdraw their child from part or all of sex education taught as part of PSHE, up until three terms before the child turns 16**



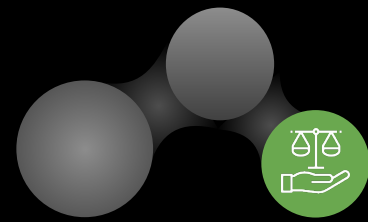
Priorities for Year 11



In KS4 we embed study strategies and metacognitive high quality talk to ensure students are given support for learning to promote ambitious work in the classroom. In turn this will develop confident, **resilient** and happy learners who are able to **achieve** great success in their GCSEs and to ensure **aspirations** for their IB education and beyond.



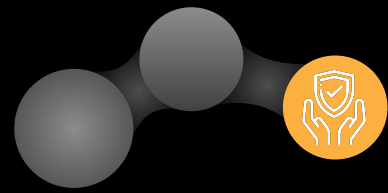
The Mentoring Curriculum



TIME	Monday	Tuesday	Wednesday	Thursday	Friday
13.15-13.25	Soft Mentoring	Soft Mentoring	Academic Mentoring	Exam Fatigue and Stamina	Assembly / Cultural Capital
13.25-13.35	Extended mentoring	Extended mentoring		Extended mentoring	



Wellbeing



Dane Court website

Mental Health and Wellbeing Page

<https://www.danecourt.kent.sch.uk/wellbeing>



Family Support Page

<https://www.danecourt.kent.sch.uk/familysupport>

