

# Dane Court Grammar School

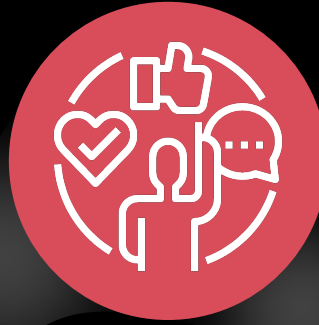
## Welcome to Year 10

8th October 2024



## Mr. Wakeley

Vision and values,  
Results and Destinations



## Mr. Bundock

Behaviour and attitudes, the  
landscape of Year 10, PSHE,  
expectations and trends



## Year 10 Students

A student view of Year 10



## The Mentor Team

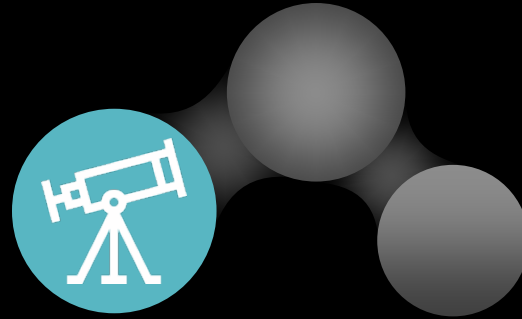
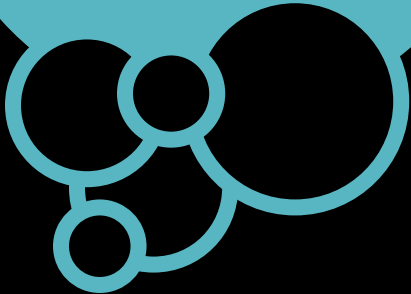
The Mentoring Curriculum



# Vision and values

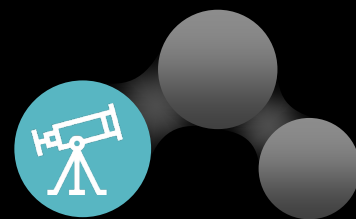


..to develop knowledgeable and caring young people who help to create a better and more peaceful world

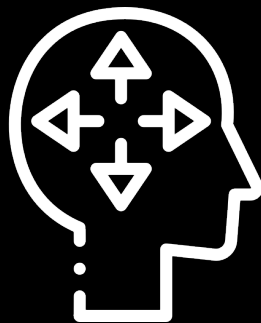




# Vision and values



Caring



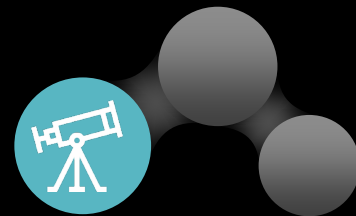
Open-minded



Principled



# Whole-school priorities 2024-2025



An ambitious curriculum

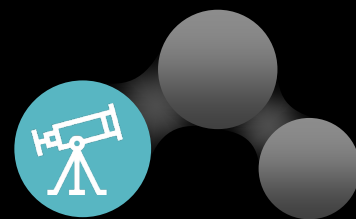
Excellent behaviour, and a safe & happy school

High quality teaching

Life-transforming outcomes & destinations



# Our Results



Dane Court IB Average Points -  
**33**

(Global Average - 30)  
Destinations - Oxford/Cambridge  
(5 students), Warwick, Exeter,  
Loughborough, Birmingham,  
Imperial, Manchester.

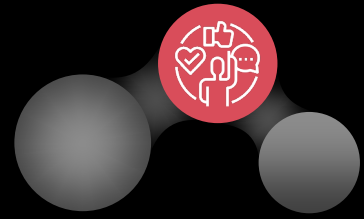


15% of **all results** were a grade 9  
(A\*\*)   
Well over half of all grades were a  
7 or above





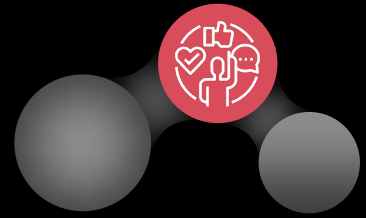
# Behaviour and attitudes



## Expectations

- Make **outstanding** behaviour the 'norm' - not just in lessons
- Be attentive and engaged in lessons - what we attend to, we learn
- Respect **ALL** members of our community - peers, staff, public
- Strive for excellent attendance - *'Pupils with higher attainment at KS2 and KS4 had lower levels of absence' (DfE)*

We will NOT tolerate any form of bullying (Incident Report Form)



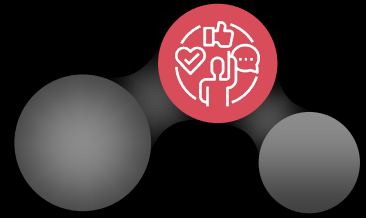
## Class Charts - online behaviour system

- Provide parents/carers with an overview of their child's behaviour
- Maintain high expectations and improve consistency
- Improve 'tracking' of behaviour - fire prevention vs fire fighting





# The Year 10 Identity



What Year 10 are getting right:

- Outstanding Engagement (39%)
- Academic Success (28%)
- Principled Behaviour (3%)

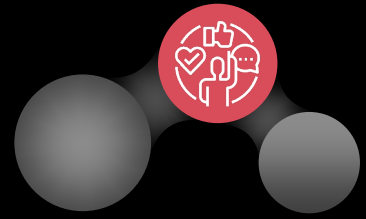
What we still need to work on:

A very small number of pupils need to improve punctuality to school in the morning and to avoid low-level disruption in some classes

73% of all behaviours logged are positive!



# Priorities for Year 10 – A student's view





# Wellbeing Vision Statement:

Dane Court strives to put the wellbeing of its community at its core.

By fostering a **caring, open-minded and principled learning environment**, we seek to create a **culture of happiness, safety and inclusivity**.



Mental Health and Wellbeing Page:



Family Support Page:





# Mental Health and Wellbeing



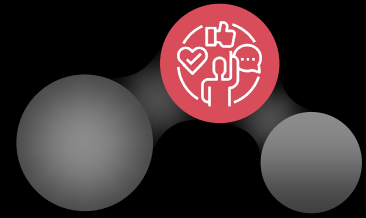
‘Mental health is **as important to a child's safety and wellbeing** as their **physical health**. It can **impact on all aspects of their life**, including their educational attainment, relationships and physical wellbeing.

Mental health can also change over time, to varying degrees of seriousness, and for different reasons.

**Over half of all Childline counselling sessions in 2022/23 related to mental or emotional health and wellbeing.’**



# Mental Health and Wellbeing



## What do we do?

- Wellbeing and mental health are a rolling agenda item for staff CPD.
- Factored into revised PSHE/mentoring curriculum
- Mental Health Ambassadors
- Year 7 Worry Form (first 3 terms)
- Health Team
- Counsellors, ELSAs and EWPs available subject to discussion
- Bespoke interventions
- Year 7 Worries Workshops Delivered by our NHS Emotional Wellbeing Team (starting this week)
- Year 10/12 - Lancaster Model Questionnaire through NHS School Health Team
- Year 12 and Year 13 Self Referral Trial
- Newsletter updates
- Focused events for parents/carers and the wider community
- Parent/Staff Choir!
- Tiered school support systems being rolled out to support pastoral teams

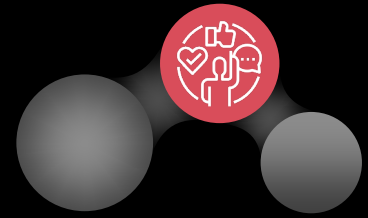
### Key Contacts:

SENCO: Mrs Holmes

DSL: Mrs Dillon



# The PSHE Curriculum - Year 10



Autumn 1

Autumn 2

Spring 1

Spring 2

Summer 1

Summer 2

Mental  
Health

Healthy  
relationships

Exploring  
Influence

Addressing  
extremism  
and  
radicalisation

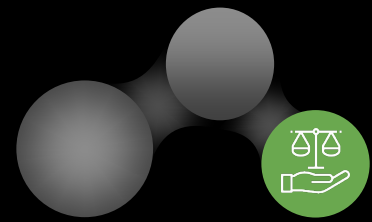
Work  
Experience  
and Careers/  
Finance

Extremism  
and  
radicalisation

Relationships, sex and health education (RSHE) is the statutory element of our PSHE curriculum and all secondary schools in England are required to teach it. Our policy and right to withdraw letter may be found on our website. **Parents/carers can withdraw their child from part or all of sex education taught as part of PSHE, up until three terms before the child turns 16**



# The Mentoring Curriculum



Mondays – Assembly

Tuesday – Homework Diary Checks and Extended Mentoring

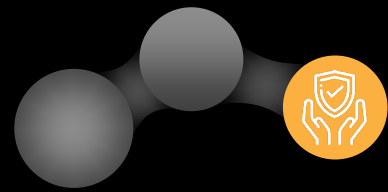
Wednesday – Academic Mentoring (Based on the VESPA Model)

Thursday – In the news and Extended Mentoring

Friday – Mentor's Choice and Targeted Extended Mentoring (1-1)



# Wellbeing



## Dane Court website

Mental Health and Wellbeing Page

<https://www.danecourt.kent.sch.uk/wellbeing>



Family Support Page

<https://www.danecourt.kent.sch.uk/familysupport>

