

Dane Court Grammar School  
Welcome to Year 8  
8th October 2024



## Mrs Dillon

Vision and values,  
Results and Destinations



## Mr Buttery

Behaviour and attitudes, the  
landscape of Year 18, PSHE,  
expectations and trends



## Year 8 Students

A student view of Year 8



## The Mentor Team

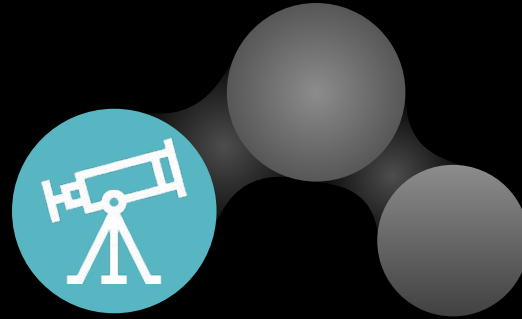
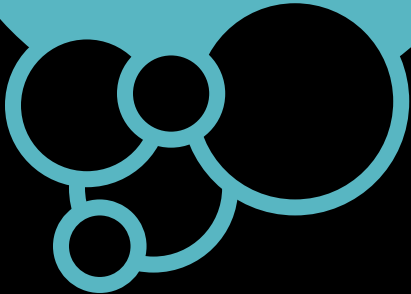
The Mentoring Curriculum



# Vision and values

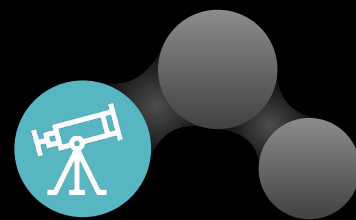


..to develop knowledgeable  
and caring young people  
who help to create a better  
and more peaceful world

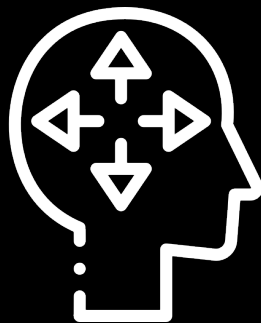




# Vision and values



Caring



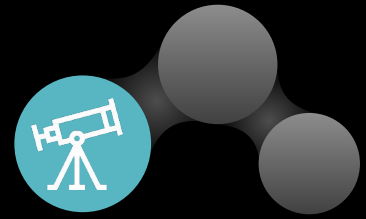
Open-minded



Principled



# Whole-school priorities 2024-2025



An ambitious curriculum

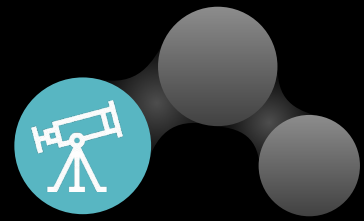
Excellent behaviour, and a safe & happy school

High quality teaching

Life-transforming outcomes & destinations



# Our Results



Dane Court IB Average Points - **33**  
(Global Average - 30)

Destinations - Oxford/Cambridge  
(5 students), Warwick, Exeter,  
Loughborough, Birmingham,  
Imperial, Manchester.

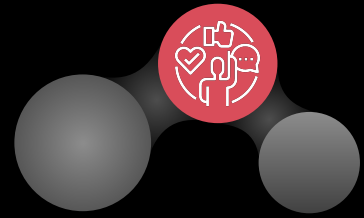


15% of **all results** were a grade 9  
(A\*\*)   
Well over half of all grades were a  
7 or above





# Behaviour and attitudes



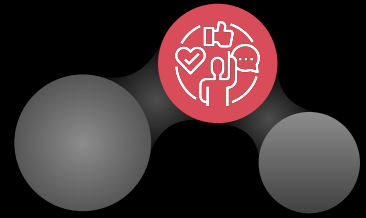
## Expectations

- Make **outstanding** behaviour the 'norm' - not just in lessons
- Be attentive and engaged in lessons - what we attend to, we learn
- Respect **ALL** members of our community - peers, staff, public
- Strive for excellent attendance - *'Pupils with higher attainment at KS2 and KS4 had lower levels of absence'* (DfE)

We will NOT tolerate any form of bullying (Incident Report Form)



# Behaviour and attitudes



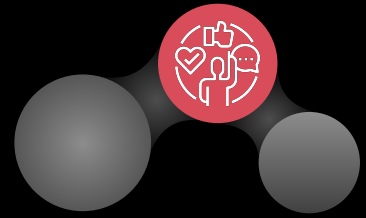
## Class Charts - online behaviour system

- Provide parents/carers with an overview of their child's behaviour
- Maintain high expectations and improve consistency
- Improve 'tracking' of behaviour - fire prevention vs fire fighting





# The Year 8 Identity



What Year 8 are getting right:

- Outstanding Engagement
- Academic Success
- 'Caring' Behaviour

What we still need to work on:

- Late to school
- Late to lesson
- Maintaining levels of focus



# Wellbeing Vision Statement:

Dane Court strives to put the wellbeing of its community at its core.

By fostering a **caring, open-minded and principled learning environment**, we seek to create a **culture of happiness, safety and inclusivity**.



Mental Health and Wellbeing Page:



Family Support Page:





# Mental Health and Wellbeing



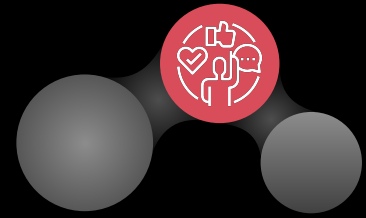
‘Mental health is **as important to a child's safety and wellbeing** as their **physical health**. It can **impact on all aspects of their life**, including their educational attainment, relationships and physical wellbeing.

Mental health can also change over time, to varying degrees of seriousness, and for different reasons.

**Over half of all Childline counselling sessions in 2022/23 related to mental or emotional health and wellbeing.’**



# Mental Health and Wellbeing



## What do we do?

- Wellbeing and mental health are a rolling agenda item for staff CPD.
- Factored into revised PSHE/mentoring curriculum
- Mental Health Ambassadors
- Year 7 Worry Form (first 3 terms)
- Health Team
- Counsellors, ELSAs and EWP's available subject to discussion
- Bespoke interventions
- Year 7 Worries Workshops Delivered by our NHS Emotional Wellbeing Team (starting this week)
- Year 10/12 - Lancaster Model Questionnaire through NHS School Health Team
- Year 12 and Year 13 Self Referral Trial
- Newsletter updates
- Focused events for parents/carers and the wider community
- Parent/Staff Choir!
- Tiered school support systems being rolled out to support pastoral teams

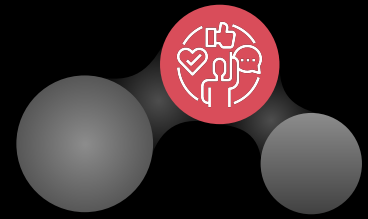
### Key Contacts:

SENCO: Mrs Holmes

DSL: Mrs Dillon



# The PSHE Curriculum - Year 8

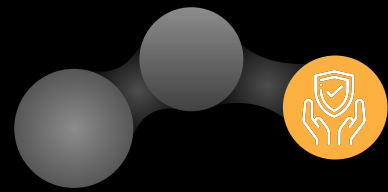


Autumn 1	Autumn 2	Spring 1	Spring 2	Summer 1	Summer 2
Drugs and alcohol	Discrimination	Emotional and physical wellbeing	Identify and relationships	Precious Liberties	Community and Careers/Digital Literacy

Relationships, sex and health education (RSHE) is the statutory element of our PSHE curriculum and all secondary schools in England are required to teach it. Our policy and right to withdraw letter may be found on our website. **Parents/carers can withdraw their child from part or all of sex education taught as part of PSHE, up until three terms before the child turns 16**



# Wellbeing



## Dane Court website

Mental Health and Wellbeing Page

<https://www.danecourt.kent.sch.uk/wellbeing>



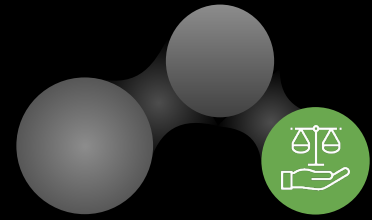
Family Support Page

<https://www.danecourt.kent.sch.uk/familysupport>





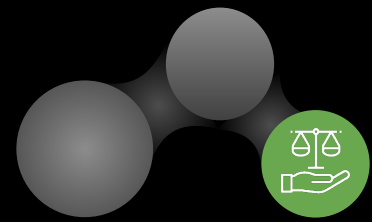
# Mentoring Overview



- Monday
  - Assembly
- Tuesday
  - Silent reading
- Wednesday
  - Mentor Curriculum
- Thursday
  - Relational Work
- Friday
  - In the news
  - Form led assembly



# The Mentoring Curriculum

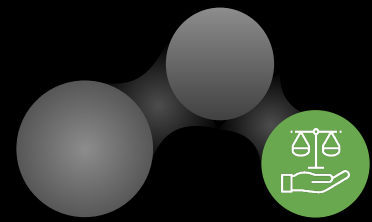


- Term 1
  - Anti-Bullying
- Term 2
  - Environment
- Term 3
  - Global Cultures
- Term 4
  - Careers
- Term 5
  - Theory of Knowledge
- Term 6
  - Academic Reading





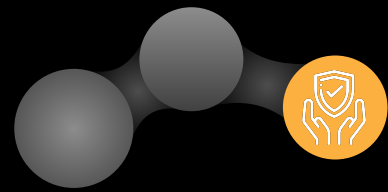
# Provisional Key Dates



- First progress check
  - Week of 9th December
  
- Information evening
  - Mid March
  
- Parents Evening
  - Early June



# Wellbeing



## Dane Court website

Mental Health and Wellbeing Page

<https://www.danecourt.kent.sch.uk/wellbeing>



Family Support Page

<https://www.danecourt.kent.sch.uk/familysupport>

